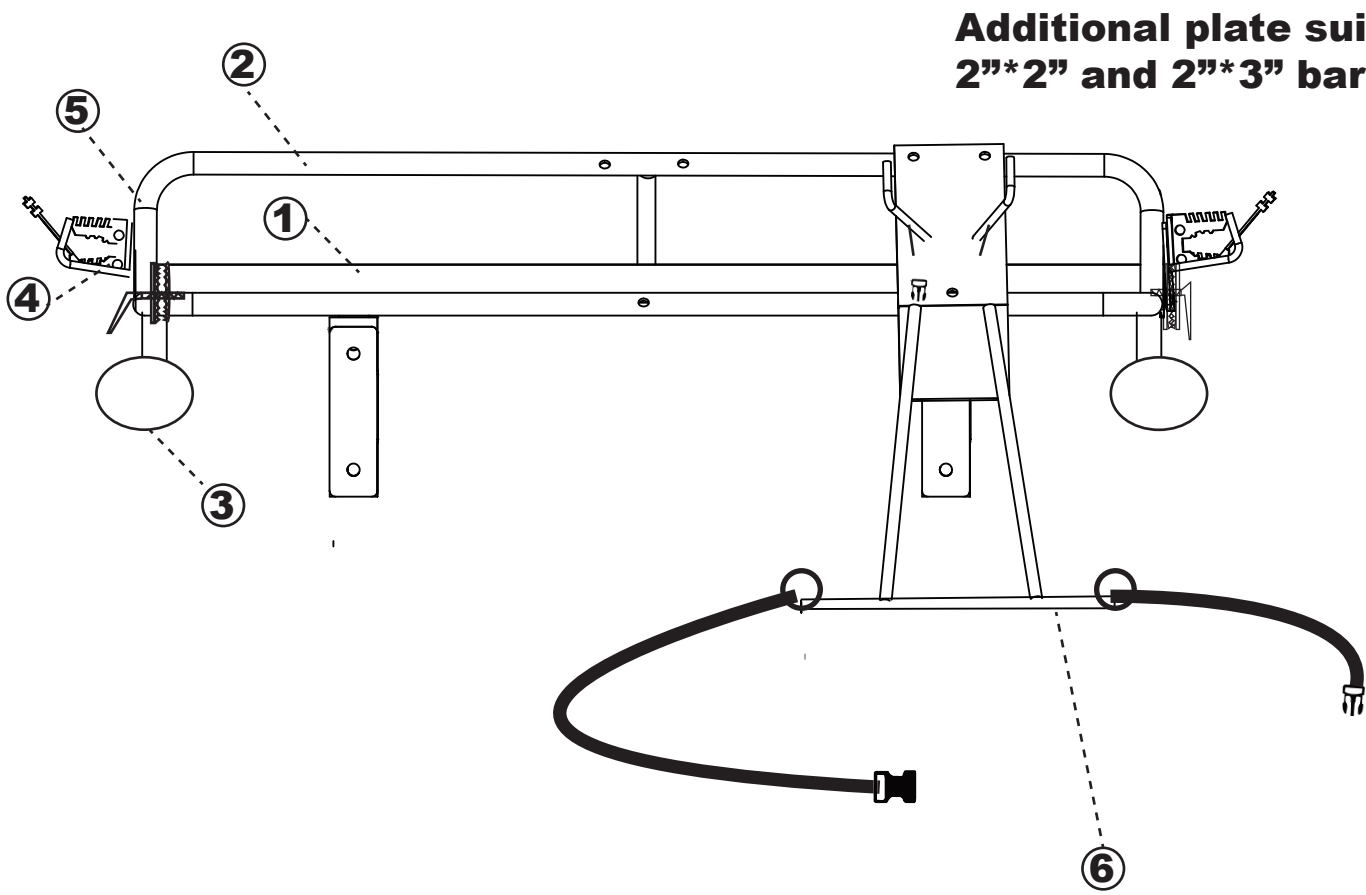


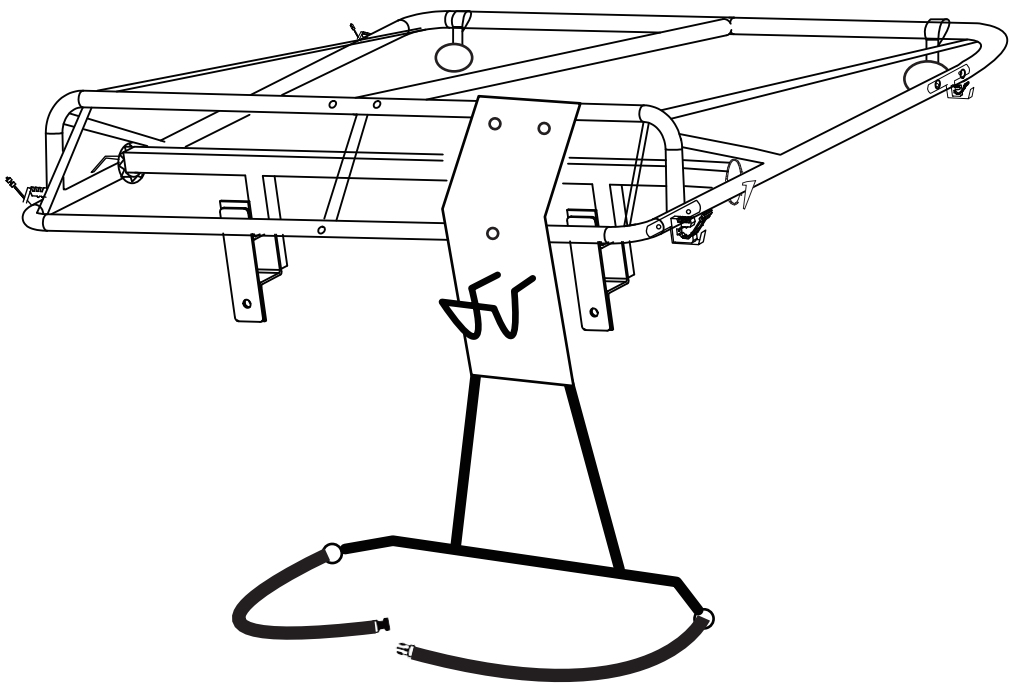
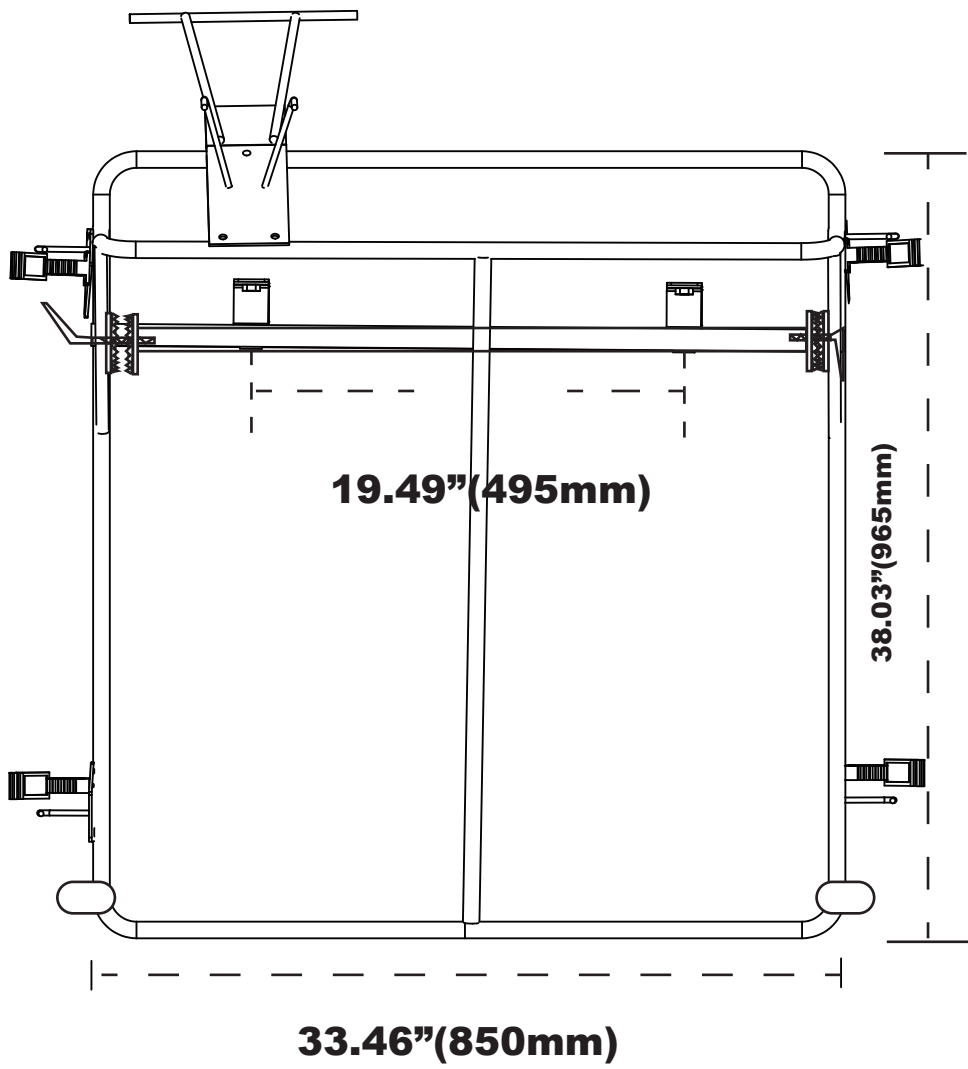
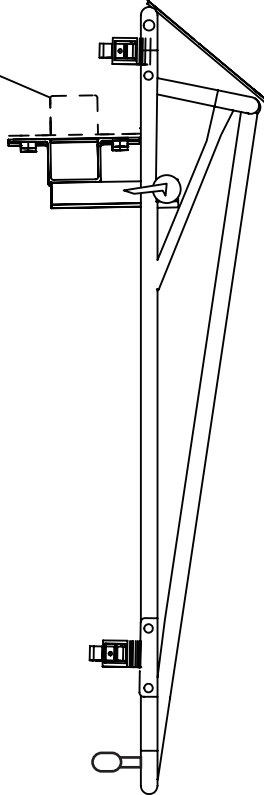
# THEPROTECTOR



## THEPROTECTOR CANOPY



Additional plate suitable for  
2"×2" and 2"×3" bar



### THEPROTECTOR CANOPY.

It is an apparatus designed to be used on various machines equipped with Roll bar Protection as a shade provider, used on but not limited to Zero turn landscaping equipment, Tractors, and other ride on machines that can be installed based on the tubular dimensions, 2x2" and or 2x3" roll bars installed on the receiving machine/equipment.

Built with a welded chassis that is designed to support and allow the user to carry a weed whacker, Trimmer, Edger and not limited to a suitable fit machine 25 Lbs. or less. Making it convenient for the operator to have the unit with the canopy in the job.

same applies to the Backpack blower, Leaf blower machine. to be mounted on the rear of the canopy allowing this backpack Blower machine to be carried along to assist the operator.

the shade is provided by our fabric/canvas Materials , Aluminum, steel, fiber glass Etc. and not limited in material that can be used for shade .

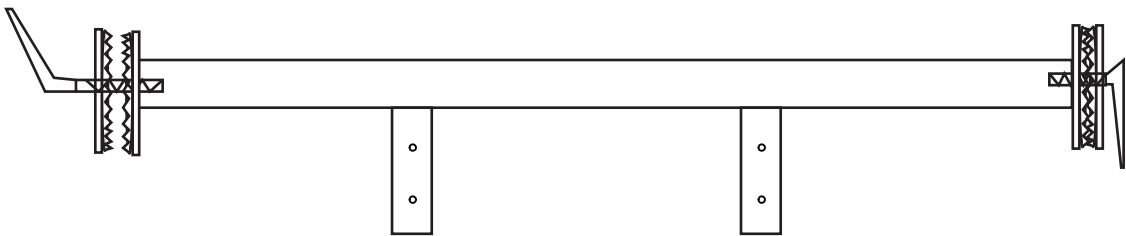
mounted/installed on the canopy frame.

A none tools or any assembly to exceed more then 5 minutes for assembly to the designated machine

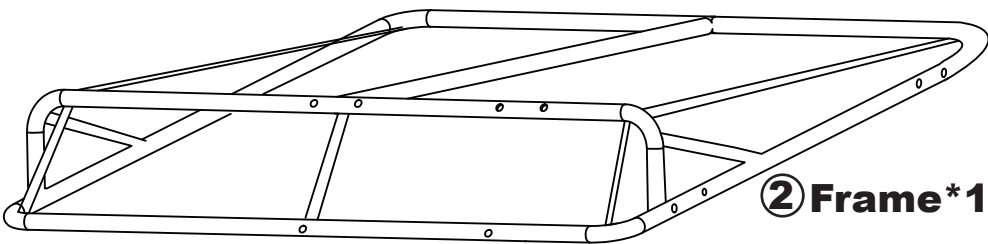
that is compatible with our mounting bracket stated dimensions.

Invented By: Marvin Quezada

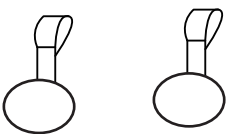
Dated on 1/15/2020



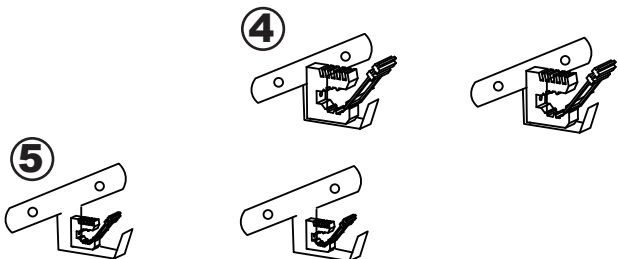
① Angel Adjustable Bar\*1



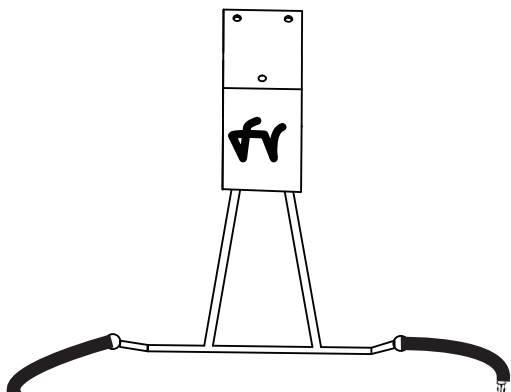
② Frame\*1



③ win mirror\*2



④ ⑤ Trimmer & Edger Holder Bracket\*4



⑥ Blower bracket \*1

Safety belt for the blower



⑦ C Bracket for 2"×4" ROPS \*2



⑧ C Bracket for 2"×3" ROPS \*2



## THEPROTECTOR LIMITED PRODUCT WARRANTY

Please take the time to read through our Standard Terms and Conditions of the THEPROTECTOR Limited Product Warranty.

### How Long Does The Coverage Last?

The product warranty becomes effective from the date of purchase by the purchaser. Coverage terminates if you sell or otherwise transfer the product. The repair of your product under warranty will not extend the period of the warranty. Each part has its own warranty. Please check the warranty list before you place an order.

### How Do You Get Service?

Products are to be returned to THEPROTECTOR Tech Support Center under your express account. Address: 10725 Capital St. Oak Park. MI +1 248-542-1831

### What is Covered?

Normal wear and tear. We will repair or replace your product if your product is found, within the warranty period, to be defective due to defective materials or workmanship existing at the time of purchase. If any part is no longer available or out of manufacture, THEPROTECTOR will replace it with a functionally-equivalent replacement part.

### What is Not Covered?

THEPROTECTOR shall NOT be liable for costs of repair or replacement of a product incurred as a result of:

1. Accidental damage, faults caused by negligent use or care, neglect, careless operation or handling of the product which is not in accordance with the THEPROTECTOR Instruction Manuals.
2. Use of the parts not assembled or installed in accordance with the instructions of THEPROTECTOR.
3. Use of parts or accessories other than those produced or recommended by THEPROTECTOR.
4. External sources such as transit damage or weather.
5. Repairs or alterations carried out by parties other than THEPROTECTOR or its authorized agents.
6. Serial numbers defaced or missing.

THEPROTECTOR warrants the mechanical and electronic components of all THEPROTECTOR series to be free of defects in material and workmanship if used under normal operating conditions for a period from the original date of purchase. If the product shows any defects within this period and that defect is not due to user error or improper use THEPROTECTOR shall, at its discretion, either replace or repair the product using suitable new or refurbished parts. In case THEPROTECTOR decides to replace the entire product, this limited warranty shall apply to the replacement product for the remaining initial warranty period.

*THEPROTECTOR DISCLAIMS ANY AND ALL LIABILITY, INCLUDING ANY EXPRESS OR IMPLIED WARRANTIES, WHETHER ORAL OR WRITTEN, FOR SUCH THIRD PARTY HARDWARE. THE CUSTOMER ACKNOWLEDGES THAT THEPROTECTOR HAS MADE ITS BEST EFFORTS TO MATCH ITS PRODUCTS TO WORK WITH THIRD PARTY HARDWARE OR THE ABILITY TO CONNECT TO AND CONTROL THIRD PARTY HARDWARE FOR THE CUSTOMER'S INTENDED PURPOSE. THEPROTECTOR ADDITIONALLY AND SPECIFICALLY DISCLAIMS ANY AND ALL LIABILITY FOR CHANGES, ADDITIONS OR UPDATES IN ANY WAY TO A THIRD PARTY MANUFACTURES PRODUCTS.*

